



报告编号 A2190039541101008E  
Report No. A2190039541101008E

第 1 页 共 7 页  
Page 1 of 7

申请单位 立达超微工业（苏州）有限公司  
Applicant LIDA MICRON INDUSTRY CO.,LTD  
地址 中国苏州工业园区亭和路46号  
Address NO.46TINGHE ROAD,SUZHOU INDUSTRIAL PARK,JIANGSU PROVINCE,P.R.CHINA

以下测试之样品及样品信息由申请者提供并确认

The following sample(s) and sample information was/were submitted and identified by/on the behalf of the client

样品名称 碳酸钙  
Sample Name 碳酸钙  
材料名称 碳酸钙/粉末  
Material 碳酸钙/粉末  
样品接收日期 2019.03.01  
Sample Received Date Mar. 1, 2019  
样品检测日期 2019.03.01-2019.03.09  
Testing Period Mar. 1, 2019 to Mar. 9, 2019

检测要求 根据客户要求，对所提交样品中的铅(Pb)，镉(Cd)，汞(Hg)，六价铬(Cr(VI))，多溴联苯(PBBs)，多溴二苯醚(PBDEs)，邻苯二甲酸酯(DBP，BBP，DEHP，DIBP)进行测试。

Test Requested As specified by client, to test Lead(Pb), Cadmium(Cd), Mercury(Hg), Hexavalent Chromium(Cr(VI)), Polybrominated Biphenyls(PBBs), Polybrominated Diphenyl Ethers (PBDEs), Phthalates (DBP, BBP, DEHP, DIBP) in the submitted sample(s).

检测依据/检测结果 请参见下页。  
Test Method/Test Result(s) Please refer to the following page(s).



主 检 周红霞  
Fested by 周红霞  
批准 陈凯敏  
Approved by 陈凯敏  
实验室经理 Lab Manager

审 核 顾翠丽  
Reviewed by 顾翠丽  
日 期 2019.03.09  
Date 2019.03.09  
No. R198692131

上海市浦东新区新金桥路1996号  
No. 1996, Xinjinqiao Road, Pudong New District, Shanghai, China

# 检测报告

## Test Report

报告编号 A2190039541101008E

第 2 页 共 7 页

Report No. A2190039541101008E

Page 2 of 7

检测依据 Test Method

测试项目 Test Item(s)	测试方法 Test Method	测试仪器 Measured Equipment(s)
铅 Lead(Pb)	IEC 62321-5:2013	ICP-OES
镉 Cadmium(Cd)	IEC 62321-5:2013	ICP-OES
汞 Mercury(Hg)	IEC 62321-4:2013+AMD1:2017 CSV	ICP-OES
六价铬 Hexavalent Chromium(Cr(VI))	IEC 62321-7-2:2017和/或IEC 62321-5:2013 测试总铬含量 IEC 62321-7-2:2017 and/or determination of Total Chromium by IEC 62321-5:2013	UV-Vis/ICP-OES
多溴联苯 Polybrominated Biphenyls(PBBs)	IEC 62321-6:2015	GC-MS
多溴二苯醚 Polybrominated Diphenyl Ethers (PBDEs)	IEC 62321-6:2015	GC-MS
邻苯二甲酸酯 Phthalates (DBP, BBP, DEHP, DIBP)	IEC 62321-8:2017	GC-MS

# 检测报告

## Test Report

报告编号 A2190039541101008E

第 3 页 共 7 页

Report No. A2190039541101008E

Page 3 of 7

**检测结果 Test Result(s)**

测试项目 Tested Item(s)	结果 Result	方法检出限 MDL
铅 Lead(Pb)	N.D.	2 mg/kg
镉 Cadmium(Cd)	N.D.	2 mg/kg
汞 Mercury(Hg)	N.D.	2 mg/kg
六价铬 Hexavalent Chromium(Cr(VI))	N.D.	8 mg/kg

测试项目 Tested Item(s)	结果 Result	方法检出限 MDL
<b>多溴联苯 Polybrominated Biphenyls(PBBs)</b>		
一溴联苯 Monobromobiphenyl	N.D.	5 mg/kg
二溴联苯 Dibromobiphenyl	N.D.	5 mg/kg
三溴联苯 Tribromobiphenyl	N.D.	5 mg/kg
四溴联苯 Tetrabromobiphenyl	N.D.	5 mg/kg
五溴联苯 Pentabromobiphenyl	N.D.	5 mg/kg
六溴联苯 Hexabromobiphenyl	N.D.	5 mg/kg
七溴联苯 Heptabromobiphenyl	N.D.	5 mg/kg
八溴联苯 Octabromobiphenyl	N.D.	5 mg/kg
九溴联苯 Nonabromobiphenyl	N.D.	5 mg/kg
十溴联苯 Decabromobiphenyl	N.D.	5 mg/kg

测试项目 Tested Item(s)	结果 Result	方法检出限 MDL
<b>多溴二苯醚 Polybrominated Diphenyl Ethers (PBDEs)</b>		
一溴二苯醚 Monobromodiphenyl ether	N.D.	5 mg/kg
二溴二苯醚 Dibromodiphenyl ether	N.D.	5 mg/kg
三溴二苯醚 Tribromodiphenyl ether	N.D.	5 mg/kg
四溴二苯醚 Tetrabromodiphenyl ether	N.D.	5 mg/kg
五溴二苯醚 Pentabromodiphenyl ether	N.D.	5 mg/kg
六溴二苯醚 Hexabromodiphenyl ether	N.D.	5 mg/kg
七溴二苯醚 Heptabromodiphenyl ether	N.D.	5 mg/kg
八溴二苯醚 Octabromodiphenyl ether	N.D.	5 mg/kg
九溴二苯醚 Nonabromodiphenyl ether	N.D.	5 mg/kg
十溴二苯醚 Decabromodiphenyl ether	N.D.	5 mg/kg

# 检测报告

## Test Report

报告编号 A2190039541101008E

第 4 页 共 7 页

Report No. A2190039541101008E

Page 4 of 7

### 检测结果 Test Result(s)

测试项目 Tested Item(s)	结果 Result	方法检出限 MDL
<b>邻苯二甲酸酯 Phthalates (DBP, BBP, DEHP, DIBP)</b>		
邻苯二甲酸二丁酯 Dibutyl phthalate(DBP) CAS#:84-74-2	N.D.	50 mg/kg
邻苯二甲酸丁基苄基酯 Butyl benzyl phthalate(BBP) CAS#:85-68-7	N.D.	50 mg/kg
邻苯二甲酸二(2-乙基)己酯 Di-(2-ethylhexyl) phthalate(DEHP) CAS#:117-81-7	N.D.	50 mg/kg
邻苯二甲酸二异丁酯 Diisobutyl phthalate(DIBP) CAS#:84-69-5	N.D.	50 mg/kg

测试样品/部位描述 白色粉末  
Tested Sample/Part Description White powder

备注: 对于检测铅, 镉, 汞之样品已完全溶解。  
-N.D. = 未检出 (小于方法检出限)  
-mg/kg = ppm = 百万分之一

Remark: **The sample(s) had been dissolved totally tested for Lead, Cadmium, Mercury.**  
-MDL = Method Detection Limit  
-N.D. = Not Detected (<MDL )  
-mg/kg = ppm = parts per million

# 检测报告 Test Report

报告编号 A2190039541101008E

第 5 页 共 7 页

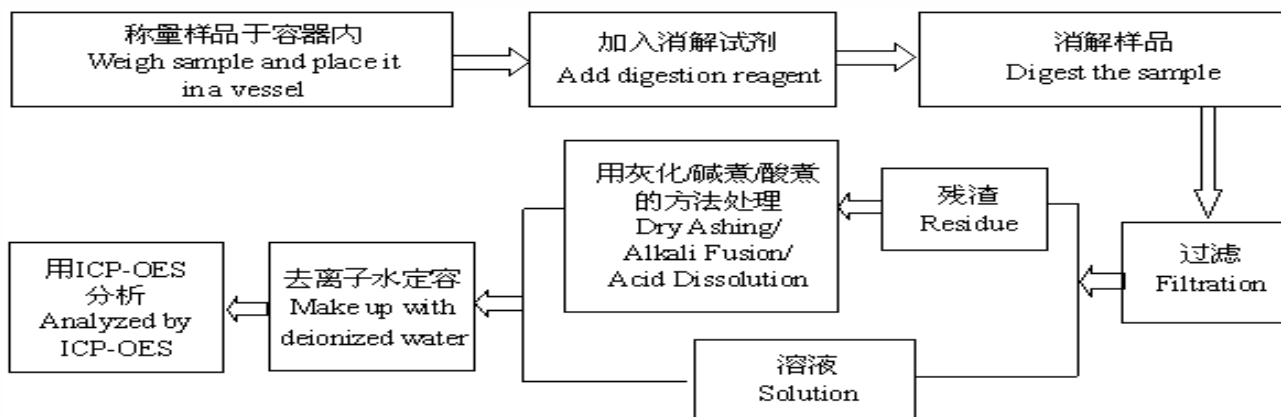
Report No. A2190039541101008E

Page 5 of 7

## 检测流程 Test Process

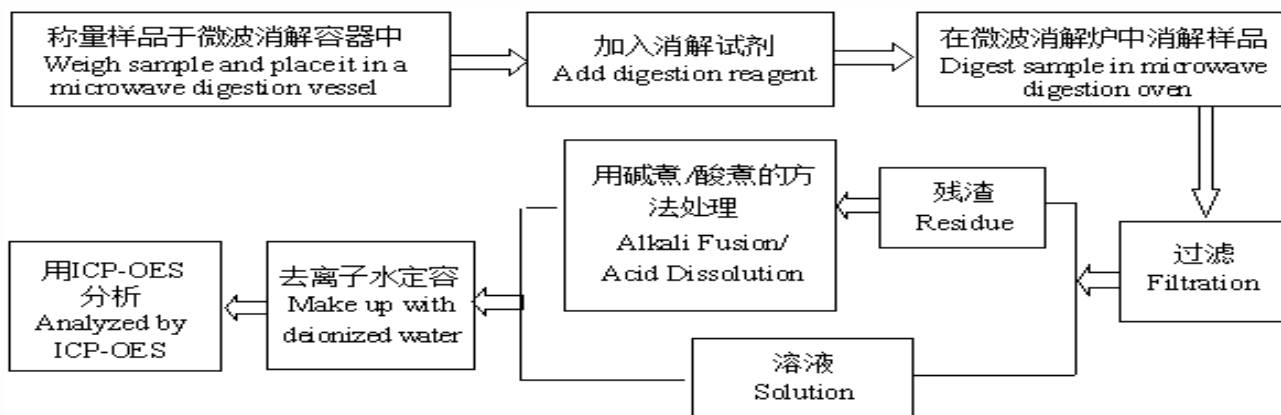
### 1. 铅(Pb), 镉(Cd), 铬(Cr)

#### Lead(Pb), Cadmium(Cd), Chromium(Cr)



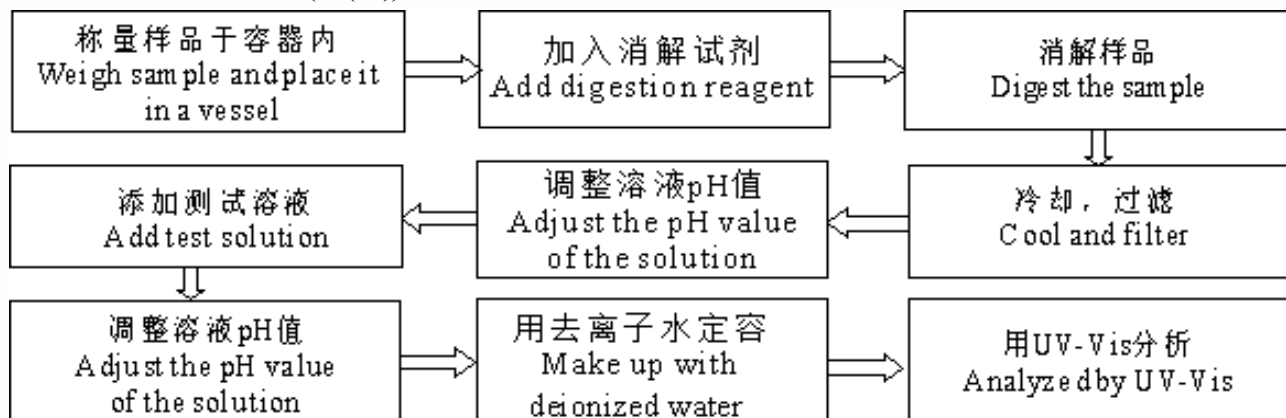
### 2. 汞(Hg)

#### Mercury(Hg)



### 3. 六价铬(Cr(VI))

#### Hexavalent Chromium(Cr(VI))



# 检测报告 Test Report

报告编号 A2190039541101008E

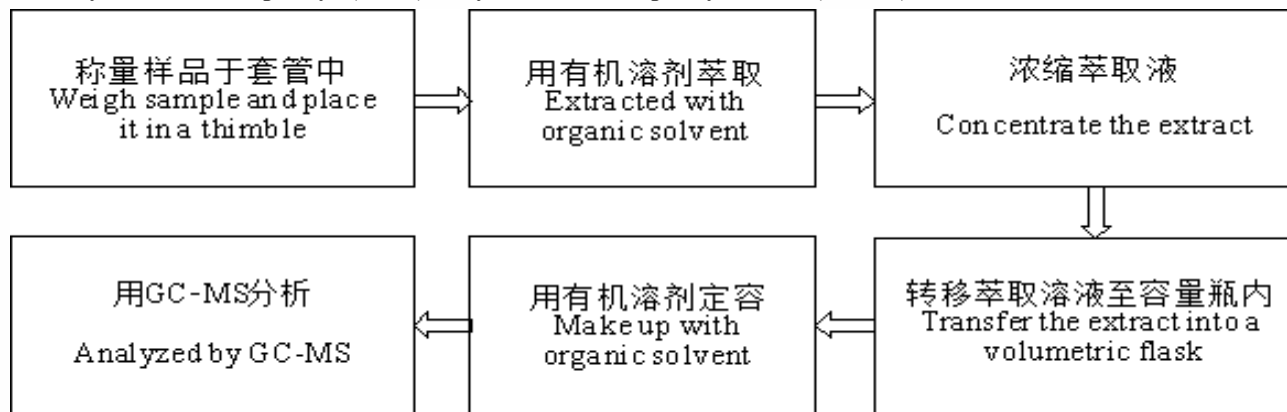
第 6 页 共 7 页

Report No. A2190039541101008E

Page 6 of 7

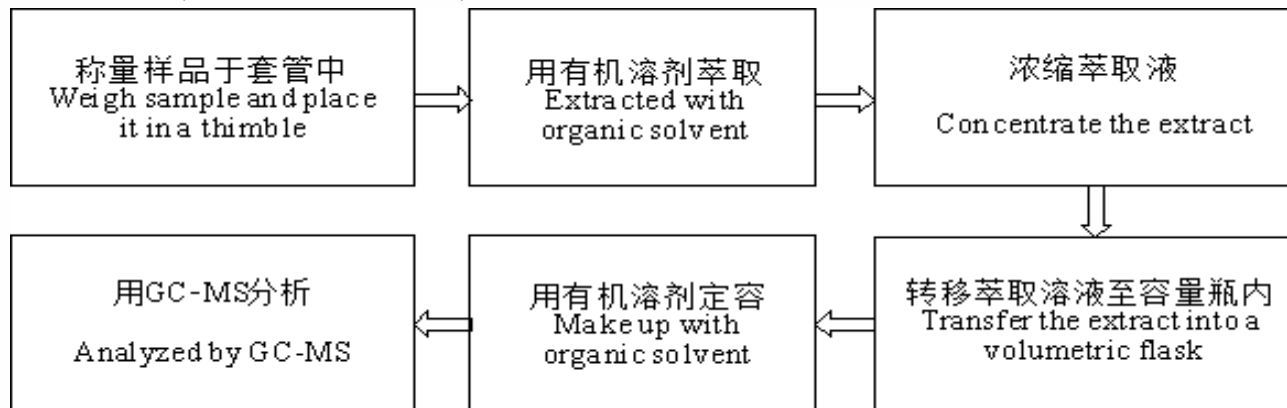
## 4. 多溴联苯(PBBs), 多溴二苯醚(PBDEs)

Polybrominated Biphenyls(PBBs), Polybrominated Diphenyl Ethers (PBDEs)



## 5. 邻苯二甲酸酯(DBP, BBP, DEHP, DIBP)

Phthalates (DBP, BBP, DEHP, DIBP)

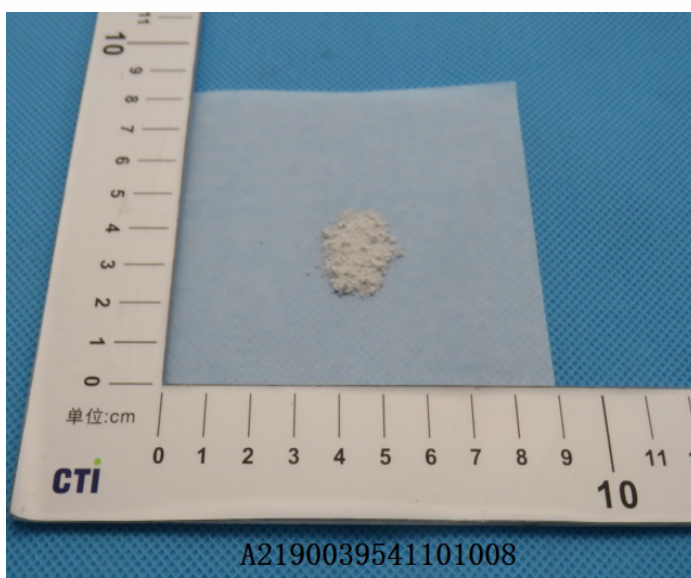


# 检测报告 Test Report

报告编号 A2190039541101008E  
Report No. A2190039541101008E

第 7 页 共 7 页  
Page 7 of 7

## 样品图片 Photo(s) of the sample(s)



\*\*\*报告结束\*\*\*

\*\*\* End of report \*\*\*

### 声明Statement:

1. 检测报告无批准人签字、“专用章”及报告骑缝章无效;  
This report is considered invalid without approved signature, special seal and the seal on the perforation;
2. 样品及样品信息由申请者提供, 申请者应对其真实性负责, CTI未核实其真实性;  
The sample(s) and sample information was/were provided by the client who should be responsible for the authenticity which CTI hasn't verified;
3. 本报告检测结果仅对受测样品负责;  
The result(s) shown in this report refer(s) only to the sample(s) tested;
4. 未经CTI书面同意, 不得部分复制本报告;  
Without written approval of CTI, this report can't be reproduced except in full;
5. 如检测报告中的英文内容与中文内容有差异, 以中文为准。  
In case of any discrepancy between the English version and Chinese version of the testing reports (if generated), the Chinese version shall prevail.